

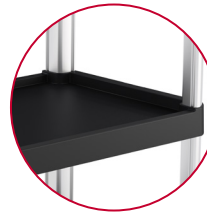
SERVICE CART



RC2040
model shown

KEY FEATURES HEAVY DUTY

- 300 lbs capacity (RC2030 and RC2040 - 100 lbs. per shelf)



FLOOR AND WALL PROTECTION

- 4 non-marring casters protect floors
- Rounded corners on each side help protect walls



ERGONOMIC HANDLE

- Dual ergonomic rounded push handles



ADDITIONAL FEATURES

- Smooth shelf surface is easy to clean
- Perfect for schools, hotels, and restaurants



SIZE: 20" W x 34" L x 37.92" H

MODEL#	CASTER	MAXIMUM CAPACITY
RC2030	TPR	300 lbs



SIZE: 20" W x 39.85" L x 38.17" H

MODEL#	CASTER	MAXIMUM CAPACITY
RC2040	TPR	300 lbs

OPTIONAL ACCESSORIES*

UTILITY BIN

SIZE: 12.78" W x 17.21" L x 10.63" H

MODEL#	CAPACITY
BIN17102	4 GALLONS



- Compatible on all Suncast Commercial service carts, all 1/2 and 3/4 cubic yard model tilt trucks and all Suncast Commercial utility carts

WASTE BIN

SIZE: 12.78" W x 17.21" L x 22.13" H

MODEL#	CAPACITY
BIN17222	8 GALLONS



- Compatible on all Suncast Commercial service carts, all 1/2 and 3/4 cubic yard model tilt trucks and all Suncast Commercial utility carts

*Optional accessories sold separately.